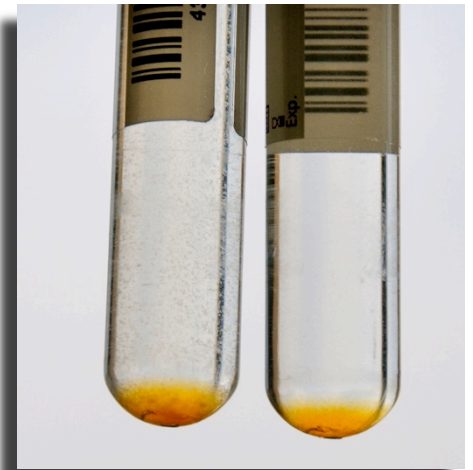


Liquid culture with MGIT 960 (BD)

- Decontaminated samples are incubated at 37°C, in MGIT tubes (7 mL) with OADC Supplement and PANTA Antimicrobial, during 56 days

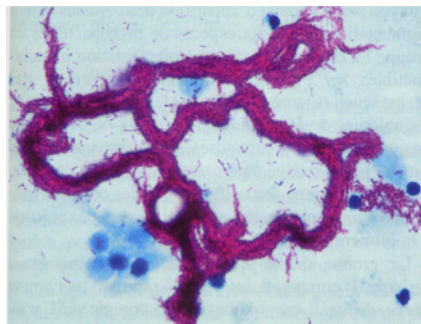


- Every hours, consumption of oxygen is automatically detected



Positive sample Negative sample

- MGIT can turn into positive result in a few days (or weeks depending on the wealth of the sample. Positive MGIT is confirmed by microscopy analysis: rope assembly of bacilli suggests *Mycobacterium tuberculosis* complex.



Ziehl-Neelsen *M. tuberculosis* colorated smear